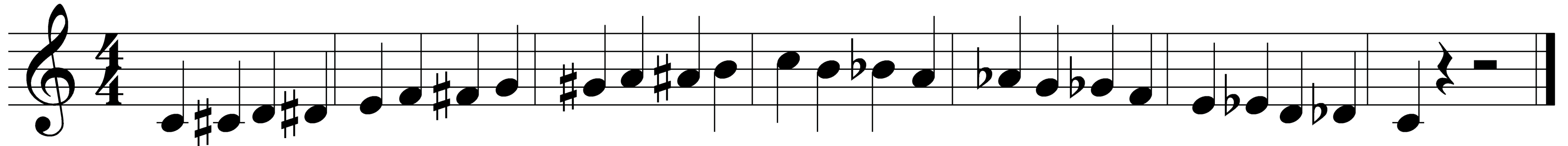
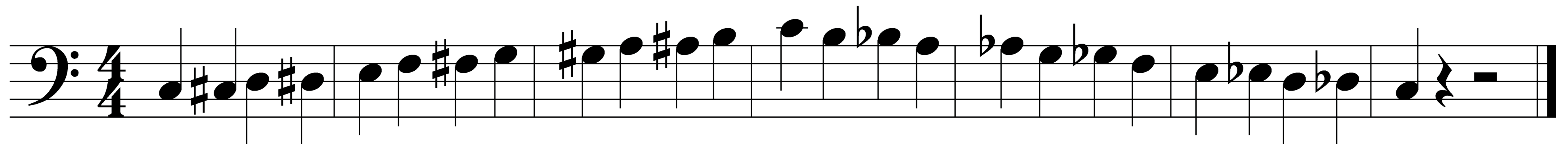


The Chromatic Scale

The **CHROMATIC SCALE** starting on **C** in **TREBLE CLEF**:



The **CHROMATIC SCALE** starting on **C** in **BASS CLEF**:



Remember: the **CHROMATIC SCALE** can start on any note!

Tip: the **CHROMATIC SCALE** is commonly written using **SHARPS** going up and **FLATS** going down. This is because of **ENHARMONIC EQUIVALENTS**.

ENHARMONIC EQUIVALENTS are notes that are the same pitch but can be expressed with two different names.

Example:
C # = D b